

KERN & SOHN GmbH
Balances, Test Weights, Microscopes,
DAkKS Calibration Laboratory
Ziegelei 1
72336 Balingen
Germany
Tel. +49 7433 9933-0
info@kern-sohn.com
www.kern-sohn.com

The oldest Precision Balance
Factory in Germany

180 YEARS
since 1844
KERN & SOHN

KERN[®]

EN

Clinic – Practice – Care

MEDICAL SCALES

PROFESSIONAL MEASURING



24

180 YEARS
since 1844
KERN & SOHN

It's so easy to order from KERN:

Tel. +49 7433 9933-0

E-Mail
info@kern-sohn.com

Online Shop
www.kern-sohn.com

We look forward to meeting you in our
online shop – simply use the QR Code:



180 Years KERN & SOHN
Interested? See ...

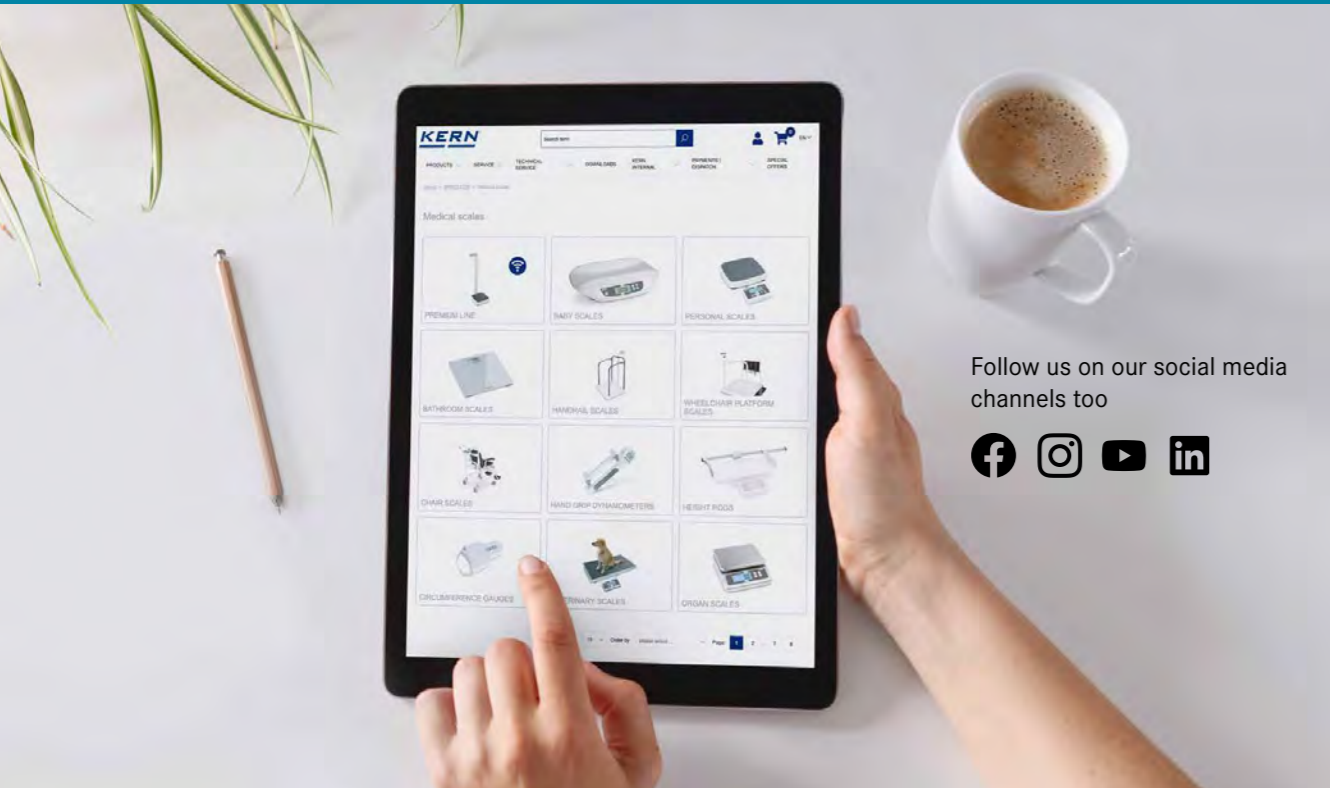
on page 4 → How it all began
on page 38 → The KERN family today
on page 68 → Sneak peek into the future



Discover the multifaceted World of Balances, Microscopes and Measuring Technology
from KERN online: www.kern-sohn.com



- Full KERN & SAUTER Product Range
- Convenient 24/7 Ordering
- Selection of more than 5,000 Items across Weighing and Measuring Technology, Optical Instruments as well as Accessories and Services
- Extensive Information and useful Download Options
- Technical Product Data Sheets
- Operating Instructions
- Descriptive Image and Video Material
- Useful KERN Services
- Technical Glossary
- KERN Dealer Portal
- Practical Filter and Search Functions



Follow us on our social media channels too



Printed in Germany by KERN & SOHN GmbH
zcm-en-tp-20241



Your Advantages – our Philosophy.
All KERN Advantages at a Glance

ONLINE SHOP WWW.KERN-SOHN.COM

Convenient ordering or just to be inspired. You will find a huge selection of products and services in our KERN online shop, 24/7.

ADVICE FROM THE EXPERTS

Our KERN experts will offer you individual advice in a range of languages and will be pleased to assist you:
Mon - Fri from 8.00 am to 5.00 pm

100% PRODUCT AVAILABILITY AND DISPATCH SERVICE

With KERN you can be sure that you will have immediate access to the products you need – provided that they are in stock. Our 24-hour dispatch service will send your products immediately. Ordered today, on their way tomorrow!

WARRANTY

We offer you as the customer up to 3 years warranty on all products in our entire range, as an option the warranty can be extended for a small fee. Because our products deliver on their promises!

CUSTOMER SERVICE

Our customer service is personally available by telephone, e-mail or video call. We speak more than 7 languages and we will be happy to help with your requests.

TRUST THROUGH EXPERIENCE

Experience counts: We are professionals when it comes to precision: A heavyweight in terms of weighing and measuring technology and this has been the case for 180 years – for the benefit of our customers. Put us to the test!

ACCREDITATIONS/ CERTIFICATION

- DAkkS accreditation DIN EN ISO/IEC 17025
- Certified QM system DIN EN ISO 9001
- Conformity assessment in accordance with NAWID 2014/31/EU
- Medical certifications DIN EN ISO 13485 and 93/42/EEC or VO (EU) 2017/745

DAKKS CALIBRATIONS

In the modern, accredited KERN calibration laboratory, we perform DAkkS calibrations for balances, test weights as well as for numerous other measuring devices.

In addition we can offer calibrations on your premises. Of course, all services are in accordance with international standards.

VERIFICATION SERVICE

Our professional verification service offers conformity assessments and verification of balances and weights – for a feeling of security in compliance with legal requirements.

INDIVIDUAL CUSTOMER SOLUTIONS

We are the right partner for special customer requirements. KERN offers numerous modular system solutions for your very individual weighing requirements. Please contact us!

SERVICE PORTAL

You can find aftersales support in our online service portal: Technical Support, help with questions or problems, etc. www.kern-sohn.com/shop/en/Serviceportal/

SPARE PARTS AND REPAIR SERVICE

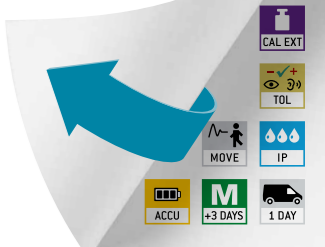
In spite of reliable KERN quality: If you should ever need to make a complaint about our products, we will help you quickly, flexibly and in an unbureaucratic manner.

NO STORAGE COSTS

You have no storage costs – we maintain the storage. Direct dispatch of ordered goods to your customer is available, invoice will be issued to you (third party business).

STILL GOT QUESTIONS?

[You can find all KERN Service Hotlines on the inside flap](#)



▶ KERN Hotlines
▶ KERN Customer Consultants
▶ KERN Models A-Z
▶ KERN Pictograms

KERN Pictograms



Adjusting program CAL
For quick setting up of the balance's accuracy. External adjusting weight required



Memory
Balance memory capacity, e.g. for article data, weighing data, tare weights, PLU etc.



Data interface RS-232
To connect the balance to a printer, PC or network



RS-485 data interface
To connect the balance to a printer, PC or other peripherals. Suitable for data transfer over large distances. Network in bus topology is possible



USB data interface
To connect the balance to a printer, PC or other peripherals



Bluetooth® data interface
To transfer data from the balance to a printer, PC or other peripherals



WIFI data interface
To transfer data from the balance to a printer, PC or other peripherals



Control outputs (optocoupler, digital I/O)
To connect relays, signal lamps, valves, etc.



Statistics
sing the saved values, the device calculates statistical data, such as average value, standard deviation etc.



PC Software
to transfer the measurements from the device to a PC



GLP/ISO log internal
The balance displays weight, date and time, independent



GLP/ISO log
With date and time. Only with KERN printers



KERN Communication Protocol (KCP)
It is a standardized interface command set for KERN balances and other instruments, which allows retrieving and controlling all relevant parameters and functions of the device. KERN devices featuring KCP are thus easily integrated with computers, industrial controllers and other digital systems



Piece counting
Reference quantities selectable. Display can be switched from piece to weight



Totalising level A
The weights of similar items can be added together and the total can be printed out



Weighing units
Can be switched to e.g. nonmetric units. Please refer to website for more details



Weighing with tolerance range (Check weighing)
Upper and lower limiting can be programmed individually, e.g. for sorting and dosing. The process is supported by an audible or visual signal, see the relevant model



ZERO
Resets the display to "0"



Hold function
When patients do not stand, sit or lie completely still, a stable weight is calculated using an average weight



Hold function
When the weighing conditions are unstable, a stable weight is calculated as an average value



Protection against dust and water splashes IPxx
The type of protection is shown in the pictogram cf. DIN EN 60529:2000-09, IEC0529:1989+A1:1999 +A2:2013



Suspended weighing
Load support with hook on the underside of the balance



Battery operation
Ready for battery operation. The battery type is specified for each device



Battery operation rechargeable
Prepared for a rechargeable battery operation



Rechargeable battery pack
Rechargeable set



Universal plug-in power supply
with universal input and optional input socket adapters for
A) EU, CH
B) EU, CH, GB, US
C) EU, CH, GB, US, AUS



Plug-in power supply
230V/50Hz in standard version for EU. On request GB, AUS or US version available



Integrated power supply unit
Integrated in balance. 230V/50Hz standard EU. More standards e.g. GB, AUS or US on request



Weighing principle Strain gauges
Electrical resistor on an elastic deforming body



Peak hold function
capturing a peak value within a measuring process



Push and Pull
the measuring device can capture tension and compression forces



Integrated scale
In the eyepiece



360° rotatable microscope head



Monocular Microscope
For the inspection with one eye



Binocular Microscope
For the inspection with both eyes



Trinocular Microscope
For the inspection with both eyes and the additional option for the connection of a camera



Abbe Condenser
With high numerical aperture for the concentration and the focusing of light



Halogen illumination
For pictures bright and rich in contrast



LED illumination
Cold, energy-saving and especially long-life illumination



Fluorescence illumination for compound microscopes
With 100W mercury lamp and filter



Fluorescence illumination for compound microscopes
With 3W LED illumination and filter



Phase contrast unit
For a higher contrast



Darkfield condenser/unit
For a higher contrast due to indirect illumination



Polarising unit
To polarise the light



Infinity system
Infinity corrected optical system



Automatic temperature compensation
For measurements between 10 °C and 30 °C



Conformity assessment
The time required for conformity assessment is specified in the pictogram



Package shipment
The time required for internal shipping preparations is shown in days in the pictogram



Pallet shipment
The time required for internal shipping preparations is shown in days in the pictogram

KERN Models A-Z

E

| | |
|---------|----|
| EMB | 63 |
| EOB/EOE | 65 |
| EOS | 66 |

F

| | |
|---------------|----|
| FH/FK | 54 |
| FOB-NL/FOB-NS | 64 |
| FOB-O | 53 |

H

| | |
|---------|----|
| HCB/HCN | 62 |
|---------|----|

M

| | |
|-------------|----|
| MAP | 42 |
| MBA | 29 |
| MBA-A01 | 7 |
| MBC/MBC-E | 8 |
| MBD | 70 |
| MCC | 24 |
| MCD | 26 |
| MCG | 48 |
| MGC | 36 |
| MGD | 71 |
| MFB | 72 |
| MPB | 73 |
| MPK | 43 |
| MPC | 14 |
| MPD/MPD-E | 16 |
| MPE/MPE-E | 10 |
| MPI | 46 |
| MPK/MPL | 44 |
| MPN-P/MPN-H | 30 |
| MPN/MPN-L | 32 |
| MPE/MPE-E | 10 |
| MPS | 12 |
| MSB | 7 |
| MSF | 7 |
| MSW | 41 |
| MTA | 22 |
| MWA | 18 |
| MWB | 47 |
| MWN | 34 |
| MWS/MWS-L | 20 |

N

| | |
|-----|----|
| NFN | 52 |
|-----|----|

O

| | |
|-----|----|
| OBE | 56 |
| OBL | 57 |
| OBN | 58 |
| OCM | 59 |
| ORA | 60 |

Approved Medical Device

EC Type Approval

KERN Customer Consultants

With questions about our products and services, we will be happy to advise you:

UK, IE, IS, FR, Maghreb, BE, LUX



Maren Möwert
Tel. +49 7433 9933-132
Mobil +49 151 46143240
maren.moewert@kern-sohn.com

North America, Near- & Middle East, Africa, Asia, Oceania



Corinna Matthes
Tel. +49 7433 9933-215
Mobil +49 151 44568364
corinna.matthes@kern-sohn.com

DK, SE, FI, NO, PL, LV, LT, EE



Mark Hauder
Tel. +49 7433 9933-310
Mobil +49 160 3378426
mark.hauder@kern-sohn.com

Category Manager Medical



Julia Sauter
Tel. +49 7433 9933-168
Mobil +49 1517 2838959
julia.sauter@kern-sohn.com

GR, CY, BG, HU, RO, SK, CZ, AL, Ex-Yugoslavia, CIS



Ariana Sevcenco
Tel. +49 7433 9933-203
Mobil +49 151 72434692
ariana.sevcenco@kern-sohn.com

Head of Sales & Marketing



Stephan Ade
Tel. +49 7433 9933-121
Mobil +49 171 3060086
ade@kern-sohn.com

KERN Hotlines

Technical questions about our products?

You will find assistance here quickly: **+49 7433 9933 - ...**



Service Hotline

for general technical questions about your KERN product

→ 199

Medical Scales

for all technical questions concerning our baby scales, personal scales, handrail scales, chair scales, wheelchair scales, dynamometers

→ 499

Laboratory and Analytical Balances

for all technical questions concerning our high quality precision balances, analytical balances (especially with electromagnetic force-compensated measuring systems, tuning fork and high application density)

→ 444

Industrial Scales / Veterinary Scales

for all technical questions concerning our basic scales (laboratory & industry), pocket balances, school balances, bench scales, price-computing scales, platform scales, counting scales, counting systems, floor scales, pallet truck scales, crane scales, veterinary scales

→ 333

Optical Devices

for all technical questions concerning our microscopes, microscope cameras, refractometers, etc.

→ 777

Calibration and Verification Service

for any questions concerning our calibration and verification service

→ 196

Retailer Information

SALES CONDITIONS

All prices are valid as of January 1st 2024, Subject to change without notice. Current prices at www.kern-sohn.com. In Europe, all prices do not include the applicable V.A.T.

Delivery Conditions

We supply ex works Balingen, e.g. the transport costs are invoiced. With our contract logistics partners we always offer you shipping at a good rate. When shipping to islands or other more distant areas, or areas which are difficult to access, the transport costs may possibly be higher, please ask for details. Any goods supplied remain KERN's property until complete payment for the goods sold has been received.



Delivery is usually via courier service.



When you see this symbol by truck, please ask for prices.n.

Extract from general terms and conditions

Court of jurisdiction/Legal domicile:

72336 Balingen, Germany;
Commercial register N°: HRB 400865, AG Stuttgart;
Managing director: Albert Sauter

For the full Terms and Conditions, please refer to the website.

<https://www.kern-sohn.com/shop/en/IMPRESSUM/AGB2/>

All dimensions are approximate. Technical changes in the course of further development, printing faults, price changes and product changes are likely in individual cases, due to product modifications as well as error.

Sale or return

within 14 days of purchase. Not valid for order-specific adaptations such as special productions, cable extensions, special weights, etc. or test services such as calibration, verification, etc. Depending on the time and effort involved, there may be processing and storage costs, please ask for details.

Warranty

→ 3 years for products with list price ≥ € 500,00
→ 2 years for components as well as products with list price < € 500,00

Does not apply to consumables such as batteries, rechargeable battery packs, etc.

Balances in areas regulated by law (► Verification) must comply with the commercial error limits during the period of validity for verification – these are usually double the verification permissible error limits. If this period of validity for verification expires, then reverification must be carried out. If, in order

to pass the verification, it should be necessary to adjust the balance to comply with the verification permissible error limits, then this does not constitute a warranty claim.

SERVICE

KERN DirectCash

The quick, secure COD procedure for protection against non-payment. With the KERN DirectCash COD system, you can safely deliver orders to end customers with unknown credit rating, with no risk of non-payment. Please request further details on this procedure.

Hire Purchase

Financing is available using KERN hire purchase – easy and convenient. Hire Purchase gives you the option of purchasing any product from our range against a simple monthly installment. The product value is financed over the period of the agreement. On payment of the last installment, the ownership of the contract item automatically transfers from the contractor to the contractee. The Hire Purchase Agreement can – if you so choose – be set for a period of between one and five years. This package includes the transfer of items as well as the guarantee for the entire transfer period.

Compared with buying the product, KERN hire purchase offers the advantage that the initial financial investment is largely unnecessary. This is particularly relevant when purchasing a number of products, for example when refitting a laboratory, a company department or a hospital ward. In addition the monthly installments constitute a direct cost and the item does not have to be capitalised by the purchaser.

AFTER-SALES-SERVICE

Repair service

Within 1 week at our plant in Balingen, transportation costs are additional. In urgent cases, if requested by customer, a replacement device will be provided until all repairs are completed; please ask.

Price reduction for a new device

If repair costs exceed the current value of the defective device, a new device will be offered for a discount price. This offer is valid only up to 2 years after warranty expiration.

Spare parts service

Usually within 48 hours, transportation costs are additional.

MARKETING SUPPORT

KERN catalogues, brochures, branch prospectuses – your own personalised marketing tools

This catalogue and branch prospectuses are available free of charge. A neutral version of the catalogue, without the KERN address imprint, is also available free of charge for your marketing activities, larger quantities on request.

On demand, your company logo and address can be printed on the back of the KERN catalogue free of charge, larger quantities on request. In this way you have got your own individual marketing tool. The KERN catalogue and branch prospectuses are available in the following languages: DE, EN, FR, IT, ES.

IMPORTANT NOTICE

Explosion hazard / Humidity

Our models are not suitable for rooms with a risk of explosion. Our models are also not suitable for rooms with a high level of air humidity (condensing). Please observe the applicable electrical regulations.

Earth's gravitational force

Electronic balances are subject to location regulations due to the earth's gravitational force. If location of use is changed, reverification and recalibration of the electronic balance is needed.

DAKKS CALIBRATION CERTIFICATE

Upon request, you will receive a DAKKS calibration certificate (Deutsche Akkreditierungsstelle GmbH – German accreditation point), which documents the precision of your balance in detail and also serves as your proof that you monitor your checking equipment in a Quality Management System to ISO 9001.


ACCESSORIES

Further extensive accessories for all our models can also be found in the KERN online shop www.kern-sohn.com

Product Group Index 2024

APPROVED MEDICAL DEVICES

6-37

| | | | |
|----------------------------|-------|---|-------|
| Height Rods | 7 | KERN Premium Line | 28-37 |
| Baby Scales | 8-9 |  | |
| Personal Floor Scales | 10-17 | Baby Scales | 29 |
| Wheelchair Platform Scales | 18-19 | Personal Floor Scales | 30-33 |
| Stretcher Scales | 20-21 | Wheelchair Platform Scales | 34-35 |
| Handrail Scales | 22-23 | Chair Scales | 36-37 |
| Chair Scales | 24-27 | | |

PROFESSIONAL CARE

40-66

| | | | |
|----------------------------------|-------|---------------------|-------|
| Tape for Measuring Circumference | 41 | Optical Instruments | 55 |
| Digital Hand Grip Dynamometer | 42 | Microscopes | 56-59 |
| Personal Floor Scales | 43-46 | Refractometers | 60 |
| Wheelchair Platform Scales | 47 | | |
| Chair Scales | 48-49 | Veterinary Scales | 61 |
| | | Hanging Scales | 62 |
| Hospital Need | 51 | Small pet Scales | 63-64 |
| Laundry cart Scales | 52 | Veterinary Scales | 65-66 |
| Organ Scales | 53 | | |
| Digital Force Gauges | 54 | | |

HOME CARE

67-73

| | |
|-----------------------|-------|
| Baby Scales | 70 |
| Personal Floor Scales | 71-73 |

| | |
|----------------------|-----------|
| Customer Support | 2 |
| Hotlines | 2 |
| 180 Years KERN | 4, 38, 68 |
| Retailer Information | 75 |





EIGHT GENERATIONS – WHAT A PASSION

Our history as the oldest German precision balance manufacturer started over 250 years ago. In 1769 in the tranquil setting of Onstmettingen in the Swabian mountains, the village blacksmith, Johann Jakob Sauter I, forged an automatic balance. This had been developed by the pastor and inventor Philipp Matthäus Hahn, with whom he worked. Sauter divided up the scale and aligned the Hahn balance to the correct weight. Every balance was a one-off and adapted to suit the customers' requirements. Johann Jakob Sauter I was the family's first balance manufacturer.

He had no idea that the Sauter family would still be producing and selling balances over 250 years later, albeit from 1844 under the company name of KERN & SOHN.

Tradition, innovation and precision

Competence and handcrafted quality characterise the work of the Sauter family and this has carried the company through the toughest of times. The fate of the company hung by a thread through great misfortune on more than one occasion. Several times, an untimely death in the Sauter family shook the succession of the company. For one generation, the namesake of our company, Gottlieb Kern stepped in. This is how the KERN brand was created in 1844, and his successor Councillor of Commerce Albert Sauter was either unable or unwilling to change it.

In spite of all the highs and lows, KERN balance manufacturing has maintained a stable course – for over 250 years. This has only been and remains possible due to constant regeneration and further development. A path for which we are extremely grateful, because it was not a given.



180 YEARS

since 1844

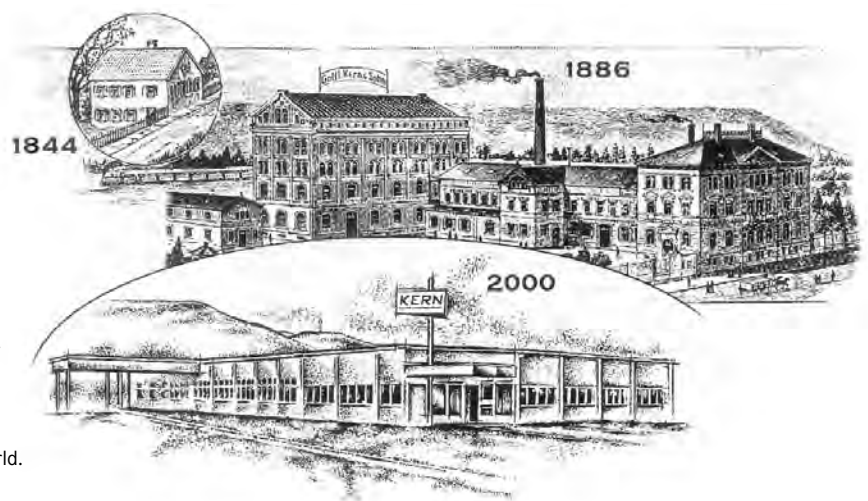
KERN & SOHN



Throughout the world we could only find one other family which had been continuously involved with balance manufacture like KERN.

According to our research, there is also no other workshop or company that has been manufacturing precision balances continuously for 200 years. This means that KERN is not only the oldest German precision balance manufacturer, but probably also the oldest in the world.

Our story continues to move forward! On page 38/39 read more about today's generation of KERN and look to the future with us on page 68/69.



APPROVED MEDICAL DEVICES



KERN MBA



KERN MPE-H

Medical personal scales are understood to be all non-automatic scales that are intended to be used to determine the body weight in medical applications (e.g. patient, baby and chair scales, verified according to class). These scales are regulated by European Directive 2014/31/EU.

Medical personal scales are also governed by the regulations for medical devices that are placed on the market in accordance with European Directive 93/42/EEC.

All models in the Approved Medical Devices category are balances which require verification and which can be used in medical applications.

Approved Medical Devices – Types of scales for medical applications that require mandatory verification:

This includes all balances which are used for determining body weight in medical applications. Determining weight is used for prognosis, diagnosis, prevention, monitoring, treatment or alleviation of illnesses.

Verified medical personal scales with a maximum resolution of 3000 digits are classified as Verification Class III (see type plate).

Any balance which is going to be used in medical applications must be registered with the metrological authority within six weeks of commissioning in accordance with § 32 MessEG (Weights and Measures Act).

The requirements for re-verification are based on national regulations. In Germany, for example, this is the Verification Ordinance. The operator of the scale is obliged to ensure that the national requirements are met and that the conformity assessment markings remain intact.

KERN & SOHN GmbH does not accept responsibility for this.



When every centimetre counts – mechanical height rod approved as a medical device for professional use in medical diagnostics

MSB 80

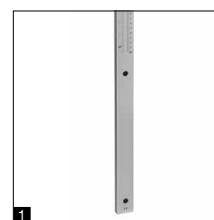
- Portable mechanical height rod
- Approved as a medical device according to 93/42/EEC or regulation (EU) 2017/745
- For babies up to a maximum of 80 cm
- Large guide surfaces make handling easier (aligning, shifting, reading)
- Measuring scale begins with 0 on the right and left, so it can be used in both directions
- Height rod can be taken apart for compact storage

MBA-A01

- Portable mechanical height rod
- Approved as a medical device according to 93/42/EEC or regulation (EU) 2017/745
- For babies up to a maximum of 80 cm
- Robust construction
- Compact size
- Easy and hygienic cleaning
- Readout on scale with moveable stop
- Large guide surfaces make handling easier (aligning, shifting, reading)

MSF 200

- Mechanical height rod
- Approved as a medical device according to 93/42/EEC or regulation (EU) 2017/745
- Readability on scale with moveable, foldable stop
- Readout on scale with moveable, foldable stop or mounting on KERN scales MPS-PM, MPB-P or wall-mounted **1**
- Sturdy aluminium profile



STANDARD



| Model | Measuring range | Increments | Overall dimensions | Net weight approx. | Price excl. of VAT ex works € |
|----------------|----------------------------|------------|--------------------|--------------------|-------------------------------|
| KERN | mm (inch) | mm | W×D×H mm | kg | |
| MSB 80 | 10 – 80 | 1 | 882×70×28 | 0,7 | 110,- |
| MBA-A01 | 30 – 80 (11 4/5 – 31 1/2) | 1 (1 1/16) | 850×240×60 | 0,4 | 120,- |
| MSF 200 | 60 – 205 (23 1/2 – 78 3/4) | 1 (1 1/16) | 53×40×1000 | 0,8 | 110,- |



Elegantly-shaped baby scale – with approval for professional mobile or stationary medical use in medical diagnostics, verification optional





Features

- Verification class III (verification is optional)
- Approved as a medical device according to 93/42/EEC or regulation (EU) 2017/745
- Popular in paediatrics: the large tray, with its optimal ergonomic curvature, is ideal for the safe weighing of babies
- **1** Special function for neonatology centres: Difference function for calculating the weight gain before and after feeding
- Robust ABS plastic. Easy and hygienic cleaning
- Secure and non-slip positioning with rubber feet
- Hold function: While weighing patients that are unable to lie still, a mean average weight value is determined. This allows for sufficient time to attend to the young patient, and then get a weight reading
- KERN MBC: Protective working cover included with delivery
- KERN MBC-E: Identical in construction to KERN MBC but without mains adapter, especially suitable for mobile use, e.g. for midwives

Technical data

- Backlit LCD display, digit height 25 mm
- Dimensions of tray W×D×H 600×280×55 mm
- Overall dimensions W×D×H 320×410×70 mm
- Overall dimensions incl. optional height rod W×D×H 600×410×112 mm
- KERN MBC: Battery operation possible, 6×1.5 V AA not included, operating time up to 20 h
- KERN MBC-E: Batteries included, 6×1.5 V AA, operating time up to 20 h
- Net weight approx. 4,6 kg

Accessories

- **2** Mechanical height rod to fix to the scale, measuring range 10 cm–80 cm, increments of 1 mm, KERN MBC-A01, **€ 157,-**
- **3** Carrying case for mobile use, only for models without height rod, KERN MBC-A02, **€ 59,-**
- **4** Protective working cover over the display device, scope of delivery: 5 items, KERN MBC-A06S05, **€ 44,-**
- Internal rechargeable battery pack, operating time up to 40 h without backlight, charging time approx. 12 h, only in combination with KERN YKA-44, KERN MBC-A08, **€ 65,-**
- Cleaning cloths, alcohol-free cloths for disinfectant wiping, quick acting, based on modern quaternary ammonium compounds and effective against papova viruses. Particularly gentle on materials, and very well suited for disinfecting products which are sensitive to alcohol. Fulfill the legal requirements for occupational safety in accordance with TRGS 525/540. Packaging contents 100 pcs., size 20×22 cm per cloth, KERN MYC-01, **€ 55,-**
- External mains adapter, 100 V - 240 V, Standard EU, CH, UK, KERN YKA-43, **€ 95,-**
- External mains adapter, 100 V - 240 V, Standard EU, KERN YKA-44, **€ 49,-**

STANDARD OPTION FACTORY

MBC MBC-E +3 DAYS

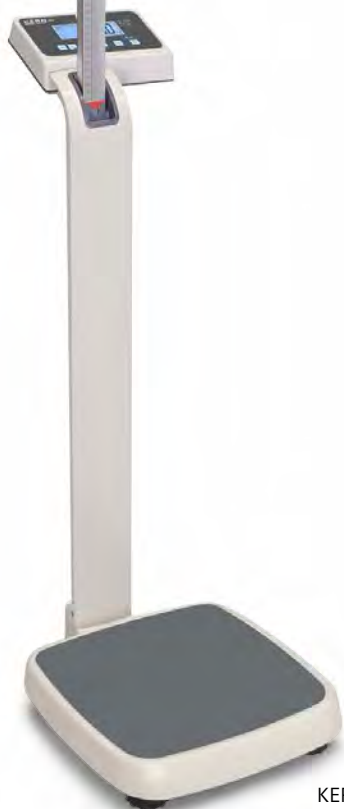


*Within the EU, official verification (conformity assessment according to NAWI 2014/31/EU) is mandatory by law for scales that are intended for use as a medical device. Please add this to your order. We require the location of use and the post code for the verification

| Model | Weighing range | Readout | Verification value | Price excl. of VAT ex works € | Mandatory by law Verification | € |
|-------------------------|----------------|---------------|--------------------|-------------------------------|-------------------------------|------|
| | [Max] kg | [d] kg | [e] kg | | KERN | |
| KERN MBC 15K2DEM | 6 15 | 0,002 0,005 | 0,002 0,005 | 370,- | 965-128. | 40,- |
| MBC 15K2DM | 6 15 | 0,002 0,005 | 0,002 0,005 | 410,- | 965-128. | 40,- |
| MBC 20K10EM | 20 | 0,01 | 0,01 | 370,- | 965-128. | 40,- |
| MBC 20K10M | 20 | 0,01 | 0,01 | 410,- | 965-128. | 40,- |



High quality personal floor scale with BMI function – with approval for professional medical use in medical diagnostics, verification optional



KERN MPE-H



KERN MPE-P



Features

- Verification class III (verification is optional)
- Approved as a medical device according to 93/42/EEC or regulation (EU) 2017/745
- **1** Practical second display on the back of the scale, which makes it easy for both the patient and the doctor or nursing staff to read the weight
- **2** The MPE-HM model has an elegant height rod integrated into the column, which can be pulled out for use and has a sturdy plastic head rest and a measuring range from 90-205 cm
- The ergonomically optimised shape and robust design mean that this range is ideal for daily use in a professional environment
- Secure and non-slip positioning with height-adjustable rubber feet
- Level indicator to level the balance precisely
- Large platform with non-slip and wear-resistant surface made of plastic, to provide a secure footing for patients
- Hold function: While weighing patients that are unable to stand still, a mean average weight value is determined. This allows for sufficient time to attend to the patient, and then get a weight reading
- Mother and child function: the parent's weight is measured, and the scale is reset to zero via the button. Subsequently, the parent and baby are weighed together. The weight of the child will then show on the display. This is particularly practical for weighing infants, who can remain cradled in the arms of a parent during the weighing process
- BMI function to determine underweight/normal weight/surplus weight
- High resolution readability: readability [d] can be increased by one decimal place for 5 sec. by the touch of a key
- Data interface RS-232 as standard

- **3** Easy to transport thanks to the two integrated transport wheels
- Battery- or mains-powered, rechargeable battery operation optional
- Protective working cover included with delivery
- KERN MPE-E: Identical in construction to KERN MPE, but supplied without mains adapter. Batteries included in the scope of delivery and therefore particularly attractive in price

Technical data

- Large backlit LCD display, digit height 25 mm
- Weighing plate dimensions W×D×H 365×360×80 mm
- Overall dimensions W×D×H
MPE-PM: 365×570×1030 mm
MPE-HM: 365×570×2134 mm, with extracted height rod
- Net weight approx. 12 kg

KERN MPE

- Battery operation possible, 6×1.5 V AA not included, operating time up to 20 h
- Mains adapter external, standard

KERN MPE-E

- Battery operation, 6×1.5 V AA standard, operating time up to 20 h

Accessories

- Protective working cover over the display device, scope of delivery: 5 items, KERN MPE-A01S05, **€ 44,-**
- Cleaning cloths, alcohol-free cloths for disinfectant wiping, quick acting, based on modern quaternary ammonium compounds and effective against papova viruses. Particularly gentle on materials, and very well suited for disinfecting products which are sensitive to alcohol. Fulfill the legal requirements for occupational safety in accordance with TRGS 525/540. Packaging contents 100 pcs., size 20×22 cm per cloth, KERN MYC-01, **€ 55,-**
- Internal rechargeable battery pack, operating time up to 40 h without backlight, charging time approx. 12 h, KERN MBC-A08, **€ 65,-**
- External mains adapter, 100 V - 240 V, Standard EU, CH, UK, KERN YKA-43, **€ 95,-**
- External mains adapter, 100 V - 240 V, Standard EU, KERN YKA-44, **€ 49,-**
- Interface cable RS-232 to connect an external device, KERN CFS-A01, **€ 50,-**
- Matrix needle printer, KERN YKN-01, **€ 310,-**
- Affordable universal label printer to print out weights on thermal labels. ASCII-capable. Convenient Auto-Forward function to automatically jump from label to label (only with KERN standard labels), KERN YKE-01, **€ 790,-**
- Thermal printer, KERN YKB-01N, **€ 380,-**
- For further details, plenty of further accessories and suitable printers, see Internet

| | | | | | | | | | | |
|----------|----------------|------|------|-------|-------|--------|-------|---------|---------|------------|
| STANDARD | | | | | | OPTION | | FACTORY | | CE 0297 |
| RS 232 | GLP PRINTER | MOVE | BATT | MULTI | 1 DAY | ACCU | MULTI | M | +3 DAYS | |
| MPE | | | | | | MPE-E | | | | |

*Within the EU, official verification (conformity assessment according to NAWI 2014/31/EU) is mandatory by law for scales that are intended for use as a medical device. Please add this to your order. We require the location of use and the post code for the verification

| Model | Weighing range | Readout | Verification value | Price excl. of VAT ex works € | Mandatory by law Verification | € |
|---------------|----------------|-----------|--------------------|-------------------------------|-------------------------------|------|
| | [Max] kg | [d] kg | [e] kg | | | |
| KERN | | | | | KERN | |
| MPE 200K-1PEM | 250 | 0,1 | 0,1 | 565,- | 965-129 | 60,- |
| MPE 250K100PM | 250 | 0,1 | 0,1 | 615,- | 965-129 | 60,- |
| MPE 200K-1HEM | 250 | 0,1 | 0,1 | 615,- | 965-129 | 60,- |
| MPE 250K100HM | 250 | 0,1 | 0,1 | 665,- | 965-129 | 60,- |



Stylish personal floor scale with BMI function – with approval for professional medical use in medical diagnostics, verification optional



KERN MPS-PM



KERN MPS-M



Features

- Verification class III (verification is optional)
- Approved as a medical device according to 93/42/EEC or regulation (EU) 2017/745
- Thanks to its compact dimensions and the good price/performance ratio, this range is ideally suited for use in treatment rooms in doctor's surgeries and hospitals
- Ergonomic display device with large numerical keypad and high-contrast LCD display for easy entry and reading of patient data, such as, for example, the height for calculating the BMI
- Sturdy steel weighing plate with a non-slip and wear-resistant surface
- Easy and hygienic cleaning
- **1** Secure and non-slip positioning with height-adjustable rubber feet
- **1** Level indicator to level the balance precisely
- Hold function: While weighing patients that are unable to stand still, a mean average weight value is determined. This allows for sufficient time to attend to the patient, and then get a weight reading
- BMI function to determine underweight/normal weight/surplus weight
- **2** Wall mount for display device, standard
- Battery- or mains-powered, rechargeable battery operation optional
- Protective working cover included with delivery

Technical data

- LCD display, digit height 25 mm
- Weighing plate dimensions WxDxH 275x295x58 mm
- Dimensions of display device WxDxH 216x110x47 mm
- MPS-M: Cable length of display device approx. 1,21 m
- Overall dimensions WxDxH
MPS-M: 275x295x58 mm
MPS-PM: 275x445x1020 mm (incl. stand)
- Battery operation possible, 6x1.5 V AA not included, operating time up to 50 h
- Mains adapter external, standard
- Data interface RS-232 as standard
- Net weight
MPS-M: approx. 4,2 kg
MPS-PM: approx. 7 kg

Accessories

- **3** Mechanical height rod, measuring range: 60 - 205 cm, can be screwed onto the column from the front or the back (MPS-P) or wall-mounted, approved as a medical device according to 93/42/EEC or regulation (EU) 2017/745, KERN MSF 200, **€ 110,-**

- Cleaning cloths, alcohol-free cloths for disinfectant wiping, quick acting, based on modern quaternary ammonium compounds and effective against papova viruses. Particularly gentle on materials, and very well suited for disinfecting products which are sensitive to alcohol. Fulfill the legal requirements for occupational safety in accordance with TRGS 525/540. Packaging contents 100 pcs., size 20x22 cm per cloth, KERN MYC-01, **€ 55,-**
- Internal rechargeable battery pack, operating time up to 35 h without backlight, charging time approx. 14 h, KERN FOB-A08, **€ 70,-**
- Interface cable RS-232 to connect an external device, KERN MPS-A08, **€ 50,-**
- Matrix needle printer, KERN YKN-01, **€ 310,-**
- Affordable universal label printer to print out weights on thermal labels. ASCII-capable. Convenient Auto-Forward function to automatically jump from label to label (only with KERN standard labels), KERN YKE-01, **€ 790,-**
- Thermal printer, KERN YKB-01N, **€ 380,-**
- For further details, plenty of further accessories and suitable printers, see Internet

| | | | | | | |
|----------|------|------|-------|-------|--------|---------|
| STANDARD | | | | | OPTION | FACTORY |
| | | | | | | |
| RS 232 | MOVE | BATT | MULTI | 1 DAY | ACCU | +3 DAYS |



*Within the EU, official verification (conformity assessment according to NAWI 2014/31/EU) is mandatory by law for scales that are intended for use as a medical device. Please add this to your order. We require the location of use and the post code for the verification

| Model | Weighing range | Readout | Verification value | Price excl. of VAT ex works € | Mandatory by law Verification |
|----------------------|----------------|---------|--------------------|-------------------------------|-------------------------------|
| | [Max] kg | [d] kg | [e] kg | | € |
| KERN | | | | | |
| MPS 200K100M | 200 | 0,1 | 0,1 | 460,- | 965-129 60,- |
| MPS 200K100PM | 200 | 0,1 | 0,1 | 730,- | 965-129 60,- |



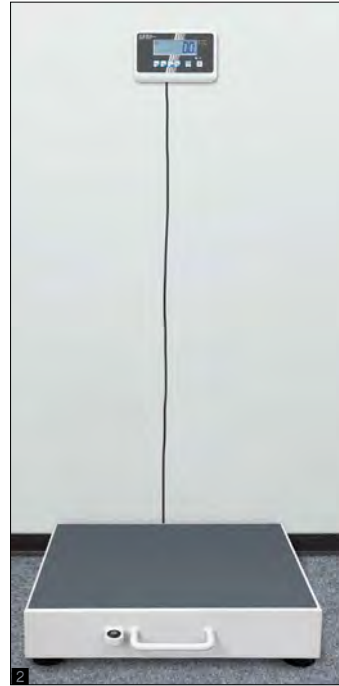
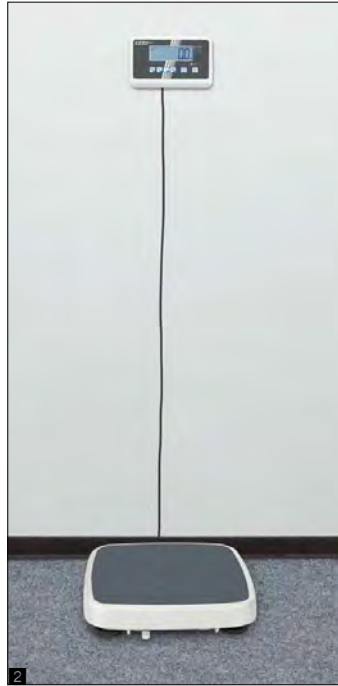
**Compact personal floor scale – with approval for professional medical use
in medical diagnostics, verification optional**



KERN MPC 250K100M



KERN MPC 300K-1LM



Features

- Verification class III (verification is optional)
- Approved as a medical device according to 93/42/EEC or regulation (EU) 2017/745
- The bestseller for doctor's surgeries, chemists and hospitals
- Robust design for daily use in a professional environment
- Easy and hygienic cleaning
- Secure and non-slip positioning with height-adjustable rubber feet
- Level indicator to level the balance precisely
- KERN MPC 300K-1LM: Version with [Max] = 300 kg and larger weighing plate. Specially suitable for weighing overweight patients who are in the obese category.
- **1** Sturdy handle for easy transportation of the scale
- **2** Flexible positioning of display device, e.g. free-standing or mounted to the wall. Wall mount for display device standard
- **3** Large platform with non-slip and wear-resistant surface made of plastic, to provide a secure footing for patients
- High resolution readability: readability [d] can be increased by one decimal place for 5 sec. by the touch of a key
- BMI function to determine underweight/normal weight/surplus weight

- Hold function: While weighing patients that are unable to stand still, a mean average weight value is determined. This allows for sufficient time to attend to the patient, and then get a weight reading
- Mother and child function: the parent's weight is measured, and the scale is reset to zero via the button. Subsequently, the parent and baby are weighed together. The weight of the child will then show on the display. This is particularly practical for weighing infants, who can remain cradled in the arms of a parent during the weighing process
- GLP/ISO report, printout of weight value, BMI etc. with date and time. FLP/GMP-compliant print form in DE, EN, FR, only in combination with RS-232 interface cable KERN CFS-A01 + MPC-A01 and printer KERN YKB-01N
- Battery- or mains-powered, rechargeable battery operation optional
- Protective working cover included with delivery

Technical data

- Large backlit LCD display, digit height 25 mm
- Dimensions of display device WxDxH 200x130x60 mm
- Cable length of display device approx. 1,8 m
- Battery operation possible, 6x1.5 V AA not included, operating time up to 20 h
- Mains adapter external, standard

Accessories

- Protective working cover over the display device, scope of delivery: 5 items, KERN MBC-A06S05, € 44,-
- Cleaning cloths, alcohol-free cloths for disinfectant wiping, quick acting, based on modern quaternary ammonium compounds and effective against papova viruses. Particularly gentle on materials, and very well suited for disinfecting products which are sensitive to alcohol. Fulfill the legal requirements for occupational safety in accordance with TRGS 525/540. Packaging contents 100 pcs., size 20x22 cm per cloth, KERN MYC-01, € 55,-
- Internal rechargeable battery pack, operating time up to 40 h without backlight, charging time approx. 12 h, KERN MBC-A08, € 65,-
- External mains adapter, 100 V - 240 V, Standard EU, CH, UK, KERN YKA-43, € 95,-
- External mains adapter, 100 V - 240 V, Standard EU, KERN YKA-44, € 49,-
- RS-232 data interface, must be ordered at purchase, KERN MPC-A01, € 110,-
- Interface cable RS-232 to connect an external device, KERN CFS-A01, € 50,-

*Within the EU, official verification (conformity assessment according to NAWI 2014/31/EU) is mandatory by law for scales that are intended for use as a medical device. Please add this to your order. We require the location of use and the post code for the verification

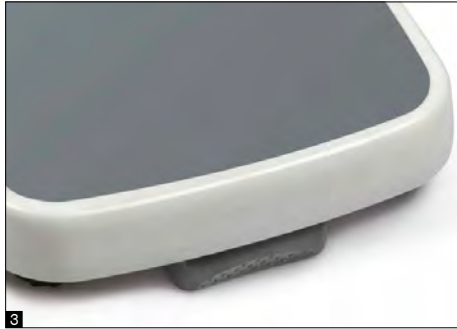
STANDARD: GLP, MOVE, BATT, MULTI, 1 DAY, OPTION: ACCU, FACTORY: RS 232, M +3 DAYS, CE 0297

| Model | Weighing range | Readout | Verification value | Weighing plate | Net weight approx. | Price excl. of VAT ex works | Mandatory by law Verification |
|---------------------|----------------|---------|--------------------|----------------|--------------------|-----------------------------|-------------------------------|
| | [Max] kg | [d] kg | [e] kg | WxDxH mm | kg | € | KERN |
| MPC 250K100M | 250 | 0,1 | 0,1 | 365x370x80 | 9 | 400,- | 965-129 |
| MPC 300K-1LM | 300 | 0,1 | 0,1 | 400x500x120 | 10 | 695,- | 965-129 |



**Professional step-on personal floor scale approved as a medical device,
verification optional**





Features

- Verification class III (verification is optional)
- Approved as a medical device according to 93/42/EEC or regulation (EU) 2017/745
- **1** The bestseller for doctor's surgeries, chemists and hospitals: easy to use with no waste of time – simply tap on it, stand on it, read the weight
- Robust design for daily use in a professional environment
- Ergonomically optimised design
- Easy and hygienic cleaning
- Secure and non-slip positioning with height-adjustable rubber feet
- Level indicator to level the balance precisely
- **2** KERN MPD 200K-1EM: Identically to MPD 250K100M though without backlight and mains adapter, battery operation only, due to the reduced resolution higher display performance. Especially attractive in price
- **3** Large platform with non-slip and wear-resistant surface made of plastic, to provide a secure footing for patients
- KERN MPD: Battery- or mains-powered, rechargeable battery operation optional
- Protective working cover included with delivery

Technical data

- Weighing plate dimensions W×D×H 365×360×80 mm
- Dimensions of display device W×D×H 200×130×60 mm
- Overall dimensions W×D×H 365×490×120 mm
- Net weight approx. 9 kg

MPD 250K100M

- Large backlit LCD display, digit height 25 mm
- Battery operation possible, 6×1.5 V AA not included, operating time up to 20 h
- Mains adapter external, standard

MPD 200K-1EM

- Large LCD display, digit height 25 mm, without backlight
- Practical battery operation, batteries included, 6×1.5 V AA, operating time up to 20 h

Accessories

- Protective working cover over the display device, scope of delivery: 5 items, KERN MBC-A06S05, **€ 44,-**
- **4** Cleaning cloths, alcohol-free cloths for disinfectant wiping, quick acting, based on modern quaternary ammonium compounds and effective against papova viruses. Particularly gentle on materials, and very well suited for disinfecting products which are sensitive to alcohol. Fulfill the legal requirements for occupational safety in accordance with TRGS 525/540. Packaging contents 100 pcs., size 20×22 cm per cloth, KERN MYC-01, **€ 55,-**

Only MPD 250K100M:

- Internal rechargeable battery pack, operating time up to 40 h without backlight, charging time approx. 12 h, KERN MBC-A08, **€ 65,-**
- External mains adapter, 100 V - 240 V, Standard EU, CH, UK, KERN YKA-43, **€ 95,-**
- External mains adapter, 100 V - 240 V, Standard EU, KERN YKA-44, **€ 49,-**

| | | | | | | |
|-------------|--------------|-------|-------------|---------|---------|------------|
| STANDARD | | | OPTION | | FACTORY | CE 0297 |
| BATT MPD | MULTI MPD | 1 DAY | ACCU MPD | +3 DAYS | M | |

*Within the EU, official verification (conformity assessment according to NAWI 2014/31/EU) is mandatory by law for scales that are intended for use as a medical device. Please add this to your order. We require the location of use and the post code for the verification

| Model | Weighing range | Readout | Verification value | Price excl. of VAT ex works € | Mandatory by law Verification |
|---------------------|----------------|-----------|--------------------|-------------------------------|-------------------------------|
| | [Max] kg | [d] kg | [e] kg | | M KERN |
| KERN | | | | | |
| MPD 250K100M | 250 | 0,1 | 0,1 | 440,- | 965-129 60,- |
| MPD 200K-1EM | 250 | 0,2 | 0,2 | 400,- | 965-129 60,- |



Wheelchair platform scale with two integrated access ramps for easy access – with approval for professional medical use in medical diagnostics, verification optional



KERN MWA 300K-1PM



KERN MWA 300K-1M



4 ▲ KERN MWA 300K-1M + MWA-A04

With the two practical handrails of the integrated folding patient seat, you can easily convert the wheelchair platform scale into a multi-functional scale. This way patients can be weighed standing up, with support from the handrail or in a comfortable seated position. If you fold the patient seat up, then a wheelchair can be pushed or driven onto the scale. The strut rod included with delivery ensures a high level of stability and torsional rigidity. The drive-through protection which is also fitted as standard for the front wheels of the wheelchair gives an extra level of safety



Features

- Verification class III (verification is optional)
- Approved as a medical device according to 93/42/EEC or regulation (EU) 2017/745
- Especially suitable for weighing patients in wheelchairs because of the low-profile platform which can be approached from either side
- **1** The large steel weighing plate also makes it ideal for weighing obese patients
- Level indicator to level the balance precisely
- Hold function: While weighing patients that are unable to sit or stand still, a mean average weight value is determined. This allows for sufficient time to attend to the patient, and then get a weight reading
- KERN MWA 300K-1PM: Wheelchair platform scale with practical handrail incl. column for easy, ergonomic mounting of the display device. The handrail offers patients that extra level of safety when driving or stepping onto the weighing platform
- **2** Both access ramps and the handrail can be folded up quickly and easily, e.g. for transportation
- BMI function to determine underweight/normal weight/surplus weight
- Battery- or mains-powered, rechargeable battery operation optional
- High resolution readability: readability [d] can be increased by one decimal place for 5 sec. by the touch of a key

- GLP/ISO report, printout of weight value, BMI etc. with date and time. FLP/GMP-compliant print form in DE, EN, FR, only in combination with RS-232 interface cable KERN CFS-A01 and printer KERN YKB-01N
- Protective working cover included with delivery

Technical data

- Large backlit LCD display, digit height 25 mm
- Dimensions weighing surface WxD 880x840 mm
- Dimensions of display device WxDxH 200x130x60 mm
- Cable length of display device approx. 3 m
- Overall dimensions, without handrail, WxDxH 1180x1130x90 mm
- Battery operation possible, 6x1.5 V AA not included, operating time up to 20 h
- Mains adapter external, standard
- Net weight approx. 70 kg

3 ◀ **KERN MWA-A02:** Handrail, without column, cannot be folded, for self-assembly on the wheelchair platform scale KERN MWA 300K-1M or MWA 300K-1PM. With the practical optional handrail set, the wheelchair platform scale KERN can be converted quickly and easily into a multi-function scale. This allows the patients to be weighed while standing on the scale, with support from the handrail or weighed in a wheelchair

Accessories

- Protective working cover over the display device, scope of delivery: 5 items, KERN MBC-A06S05, **€ 44,-**
- Cleaning cloths, alcohol-free cloths for disinfectant wiping, quick acting, based on modern quaternary ammonium compounds and effective against papova viruses. Particularly gentle on materials, and very well suited for disinfecting products which are sensitive to alcohol. Fulfill the legal requirements for occupational safety in accordance with TRGS 525/540. Packaging contents 100 pcs., size 20x22 cm per cloth, KERN MYC-01, **€ 55,-**
- Internal rechargeable battery pack, operating time up to 40 h without backlight, charging time approx. 12 h, KERN MBC-A08, **€ 65,-**
- External mains adapter, 100 V - 240 V, Standard EU, CH, UK, KERN YKA-43, **€ 95,-**
- External mains adapter, 100 V - 240 V, Standard EU, KERN YKA-44, **€ 49,-**
- Interface cable RS-232 to connect an external device, KERN CFS-A01, **€ 50,-**
- **3** Handrail, lacquered steel, dimensions WxDxH approx. 560x40x920 mm, scope of supply: handrail, fasteners, net weight approx. 4,0 kg, KERN MWA-A02, **€ 140,-**
- **4** MWA 300K-1M: Handrail kit with folding patient seat, please add this to your order, retrofitting is not possible, KERN MWA-A04, **€ 1070,-**
- Matrix needle printer, KERN YKN-01, **€ 310,-**
- Affordable universal label printer to print out weights on thermal labels. ASCII-capable. Convenient Auto-Forward function to automatically jump from label to label (only with KERN standard labels), KERN YKE-01, **€ 790,-**
- Thermal printer, KERN YKB-01N, **€ 380,-**
- For further details, plenty of further accessories and suitable printers, see Internet

| | | | | | | | | | | | |
|----------|----------------|------|-------|-----|-------|--------|--------|---|---------|--|------------|
| STANDARD | | | | | | | OPTION | | FACTORY | | CE 0297 |
| RS 232 | GLP PRINTER | MOVE | IP 65 | BAT | MULTI | 2 DAYS | ACCU | M | +3 DAYS | | |

*Within the EU, official verification (conformity assessment according to NAWI 2014/31/EU) is mandatory by law for scales that are intended for use as a medical device. Please add this to your order. We require the location of use and the post code for the verification

| Model | Weighing range [Max] kg | Readout [d] kg | Verification value [e] kg | Price excl. of VAT ex works € | Mandatory by law Verification | |
|---------------------|-------------------------------|----------------------|---------------------------------|--|----------------------------------|------|
| | | | | | KERN | € |
| MWA 300K-1M | 300 | 0,1 | 0,1 | 1650,- | 965-129 | 60,- |
| MWA 300K-1PM | 300 | 0,1 | 0,1 | 1690,- | 965-129 | 60,- |



Wheelchair platform scale with low overall height for easy access – with approval for professional, mobile medical use in medical diagnostics, verification optional

1 KERN MWS



2 KERN MWS-L





Features

- Verification class III (verification is optional)
- Approved as a medical device according to 93/42/EEC or regulation (EU) 2017/745
- Especially suitable for weighing patients in wheelchairs, because the low-profile platform can be approached from either side and the memory function for tare weights for up to five (electric) wheelchairs
- **1** KERN MWS: Three balances in one: With the practical KERN MWS-A02 handrail set, the wheelchair platform scale KERN MWS 300K100M can be converted quickly and easily into a multi-function scale. In this way patients can be weighed standing up on their own, using the support of the handrail or in a wheelchair. For a more ergonomic system the display device can be fitted directly onto the handrail
- **2** KERN MWS-L: Due to its large dimensions and large weighing capacity, it is especially suitable for weighing immobile patients on stretchers or wheelchairs
- The large steel weighing plate also makes it ideal for weighing obese patients
- Secure and non-slip positioning with height-adjustable rubber feet
- Level indicator to level the balance precisely
- Hold function: While weighing patients that are unable to stand still, a mean average weight value is determined. This allows for sufficient time to attend to the patient, and then get a weight reading

- BMI function to determine underweight/normal weight/surplus weight
- The scale can be easily transported using the handle and two rollers and does not require much storage space
- Display device with two magnets on the back, ideal to fix it to metallic surfaces, e.g. to the weighing plate
- Battery- or mains-powered, rechargeable battery operation optional
- Protective working cover included with delivery

Technical data

- LCD display, digit height 25 mm
- Dimensions of display device WxDxH 210x110x45 mm
- Cable length of display device approx. 1,85 m
- Overall dimensions WxDxH
MWS 300K100M: 1158x835x60 mm
MWS 400K100DM: 1255x1060x69 mm
MWS 300K-1LM: 1500x860x68 mm
- Battery operation possible, 6x1.5 V AA not included, operating time up to 50 h
- Mains adapter external, standard

Accessories

- **1** Handrail set to fit to the wheelchair platform scale KERN MWS 300K100M, WxDxH approx. 60x1150x900 mm. Scope of delivery: two hand-

- rails, a stability bar, fasteners, overall dimensions WxDxH 1155x830x65 mm (MWS 300K100M + MWS-A02), KERN MWS-A02, **€ 620,-**
- Stand to elevate display device, height of stand approx. 950 mm, KERN MWS-A01, **€ 235,-**
- Cleaning cloths, alcohol-free cloths for disinfectant wiping, quick acting, based on modern quaternary ammonium compounds and effective against papova viruses. Particularly gentle on materials, and very well suited for disinfecting products which are sensitive to alcohol. Fulfill the legal requirements for occupational safety in accordance with TRGS 525/540. Packaging contents 100 pcs., size 20x22 cm per cloth, KERN MYC-01, **€ 55,-**
- Internal rechargeable battery pack, operating time up to 45 h without backlight, charging time approx. 14 h, KERN FOB-A08, **€ 70,-**
- Interface cable RS-232 to connect an external device, KERN MPS-A08, **€ 50,-**
- Matrix needle printer, KERN YKN-01, **€ 310,-**
- Affordable universal label printer to print out weights on thermal labels. ASCII-capable. Convenient Auto-Forward function to automatically jump from label to label (only with KERN standard labels), KERN YKE-01, **€ 790,-**
- Thermal printer, KERN YKB-01N, **€ 380,-**
- For further details, plenty of further accessories and suitable printers, see Internet

| | | | | | |
|-----------------|------|---------------|-------|----------------|---------|
| STANDARD | | OPTION | | FACTORY | |
| | | | | | |
| RS 232 | MOVE | BATT | MULTI | 2 DAYS | ACCU |
| | | | | | |
| | | | | | +3 DAYS |



| Model | Weighing range | Readout | Verification value | Weighing plate | Net weight approx. | Price excl. of VAT ex works € | Mandatory by law Verification |
|--------------------------|----------------|-----------|--------------------|----------------|--------------------|-------------------------------|-------------------------------|
| | [Max] kg | [d] kg | [e] kg | WxDxH mm | kg | | KERN € |
| KERN MWS 300K100M | 300 | 0,1 | 0,1 | 910x740 | 30 | 1400,- | 965-129 60,- |
| MWS 400K100DM | 300 400 | 0,1 0,2 | 0,1 0,2 | 1000x1000 | 44 | 1850,- | 965-130 83,- |
| MWS 300K-1LM | 300 | 0,1 | 0,1 | 800x1200 | 42 | 1950,- | 965-129 60,- |

*Within the EU, official verification (conformity assessment according to NAWI 2014/31/EU) is mandatory by law for scales that are intended for use as a medical device. Please add this to your order. We require the location of use and the post code for the verification



**Sturdy handrail scale for a secure feeling during weighing –
with approval for professional medical use in medical diagnostics,
verification optional**





Features

- Verification class III (verification is optional)
- Approved as a medical device according to 93/42/EEC or regulation (EU) 2017/745
- Ideal for care homes, centres for geriatric medicine, internal medicine and many more
- **1** The sturdy support structure helps fragile and weak patients to stand safely and, at the same time, allows a precise determination of the patients' weight
- Large surface, for the patient to have the most secure footing, hygienic and easy to clean
- Particularly easy access to the platform through its low height of just 30 mm
- Level indicator to level the balance precisely
- Hold function: While weighing patients that are unable to sit or stand still, a mean average weight value is determined. This allows for sufficient time to attend to the patient, and then get a weight reading
- **2** Practical second display on the back of the scale, which makes it easy for both the patient and the doctor or nursing staff to read the weight
- BMI function to determine underweight/normal weight/surplus weight
- Battery- or mains-powered, rechargeable battery operation optional
- Protective working cover included with delivery

Technical data

- Large backlit LCD display, Digit height 25 mm
- Dimensions of display device WxDxH 200x55x128 mm
- Dimensions weighing surface WxD 600x600 mm
- Weighing plate dimensions WxDxH 780x680x68 mm
- Overall dimensions WxDxH 780x680x1100 mm
- Optional battery operation, 6x1.5 V AA not included in scope of delivery, operating time up to 20 h
- Mains adapter external, standard
- Net weight approx. 42 kg

Accessories

- Protective working cover over the display device, scope of delivery: 5 items, KERN MPE-A01S05, **€ 44,-**
- Cleaning cloths, alcohol-free cloths for disinfectant wiping, quick acting, based on modern quaternary ammonium compounds and effective against papova viruses. Particularly gentle on materials, and very well suited for disinfecting products which are sensitive to alcohol. Fulfill the legal requirements for occupational safety in accordance with TRGS 525/540. Packaging contents 100 pcs., size 20x22 cm per cloth, KERN MYC-01, **€ 55,-**

- Internal rechargeable battery pack, operating time up to 40 h without backlight, charging time approx. 12 h, KERN MBC-A08, **€ 65,-**
- External mains adapter, 100 V - 240 V, Standard EU, CH, UK, KERN YKA-43, **€ 95,-**
- External mains adapter, 100 V - 240 V, Standard EU, KERN YKA-44, **€ 49,-**
- Interface cable RS-232 to connect an external device, KERN CFS-A01, **€ 50,-**
- Matrix needle printer, KERN YKN-01, **€ 310,-**
- Affordable universal label printer to print out weights on thermal labels. ASCII-capable. Convenient Auto-Forward function to automatically jump from label to label (only with KERN standard labels), KERN YKE-01, **€ 790,-**
- Thermal printer, KERN YKB-01N, **€ 380,-**
- For further details, plenty of further accessories and suitable printers, see Internet

STANDARD OPTION FACTORY

| | | | | | | | | |
|--------|-------------|------|------|-------|--------|------|-----------|------|
| | | | | | | | | |
| RS 232 | GLP PRINTER | MOVE | BATT | MULTI | 2 DAYS | ACCU | M +3 DAYS | 0297 |

*Within the EU, official verification (conformity assessment according to NAWI 2014/31/EU) is mandatory by law for scales that are intended for use as a medical device. Please add this to your order. We require the location of use and the post code for the verification

| Model | Weighing range | Readout | Verification value | Price excl. of VAT ex works € | Mandatory by law Verification |
|-------------|----------------|-----------|--------------------|-------------------------------|-------------------------------|
| KERN | [Max] kg | [d] kg | [e] kg | | |
| MTA 400K-1M | 300 400 | 0,1 0,2 | 0,1 0,2 | 2000,- | 965-130 € 83,- |



**Mobile chair scale with four steerable wheels –
with approval for professional medical use in medical
diagnostics, verification optional**





Features

- Verification class III (verification is optional)
- Approved as a medical device according to 93/42/EEC or regulation (EU) 2017/745
- **1** Mobile version with particularly convenient locking brakes on all four wheels
- With its four wheels, this chair scale provides maximum mobility in bringing the scale to the patient. This ensures more efficient use of time for the clinic staff and greater safety for the patients who can be weighed in their familiar environment
- The four steerable rollers, with their large diameter, make it easier to get over door thresholds, edges and across the gaps into elevators
- This chair scale is the ideal measuring instrument for retirement homes, rehabilitation centres and clinics with lots of patients, and can weigh overweight people up to 300 kg
- For fragile patients, the comfortable, ergonomically optimised seat offers secure support during weighing
- **2** Two foldable armrests and footrests make transfers into the chair easier. Ideal for overweight patients or barrier-free use, e.g. for transfers from a bed to the scale
- Hold function: While weighing patients that are unable to sit still, a mean average weight value is determined. This allows for sufficient time to attend to the patient, and then get a weight reading

- BMI function to determine underweight/normal weight/surplus weight
- Ergonomic display device with large numerical keypad and high-contrast LCD display for easy entry and reading of patient data, such as, for example, the height for calculating the BMI
- Battery- or mains-powered, rechargeable battery operation optional
- Protective working cover included with delivery

Technical data

- **3** LCD display, digit height 25 mm
- Dimensions of display device WxDxH 210x110x50 mm
- Dimensions of seating surface WxD 380x360 mm
- Overall dimensions WxDxH 647x860x910 mm
- Battery operation possible, 6x1.5 V AA not included, operating time up to 50 h
- Mains adapter external, standard
- Net weight approx. 22 kg

Accessories

- Cleaning cloths, alcohol-free cloths for disinfectant wiping, quick acting, based on modern quaternary ammonium compounds and effective against papova viruses. Particularly gentle on materials, and very well suited for disinfecting products which are sensitive to alcohol. Fulfill the legal requirements for occupational safety in accordance with TRGS 525/540. Packaging contents 100 pcs., size 20x22 cm per cloth, KERN MYC-01, **€ 55,-**
- Internal rechargeable battery pack, operating time up to 50 h without backlight, charging time approx. 14 h, KERN FOB-A08, **€ 70,-**
- Interface cable RS-232 to connect an external device, KERN MPS-A08, **€ 50,-**
- Matrix needle printer, KERN YKN-01, **€ 310,-**
- Affordable universal label printer to print out weights on thermal labels. ASCII-capable. Convenient Auto-Forward function to automatically jump from label to label (only with KERN standard labels), KERN YKE-01, **€ 790,-**
- Thermal printer, KERN YKB-01N, **€ 380,-**
- For further details, plenty of further accessories and suitable printers, see Internet

| | | | | | | | | |
|-----------------|------|------|-------|--------|---------------|---------|----------------|--|
| STANDARD | | | | | OPTION | | FACTORY | |
| | | | | | | | | |
| RS 232 | MOVE | BATT | MULTI | 2 DAYS | ACCU | +3 DAYS | | |

*Within the EU, official verification (conformity assessment according to NAWI 2014/31/EU) is mandatory by law for scales that are intended for use as a medical device. Please add this to your order. We require the location of use and the post code for the verification

| Model | Weighing range | Readout | Verification value | Price excl. of VAT ex works € | Mandatory by law Verification |
|---------------------|----------------|-----------|--------------------|-------------------------------|-------------------------------|
| KERN | [Max] kg | [d] kg | [e] kg | | KERN |
| MCB 300K100M | 300 | 0,1 | 0,1 | 1400,- | 965-129 € |



Ergonomically optimised chair scale – with approval for professional medical use in medical diagnostics, verification optional





Features

- Verification class III (verification is optional)
- Approved as a medical device according to 93/42/EEC or regulation (EU) 2017/745
- This chair scale is the ideal measuring instrument for retirement homes, rehabilitation centres and clinics with lots of patients, and can weigh overweight people up to 250 kg
- **1** Mobile version with two steerable rollers and particularly convenient locking brakes at the rear
- With its four wheels, this chair scale provides maximum mobility in bringing the scale to the patient. This ensures more efficient use of time for the clinic staff and greater safety for the patients who can be weighed in their familiar environment
- The rollers, with their large diameter, make it easier to get over door thresholds, edges and across the gaps into elevators
- For fragile patients, the extra wide, comfortable, ergonomically-optimised seat offers safe, secure seating during weighing
- Because of the clearly contrasting black colour of the seating surface, footrests and armrests ideally suitable for dementia patients
- **2** Two foldable armrests and footrests make transfers into the chair easier. Ideal for overweight patients or barrier-free use, e.g. for transfers from a bed to the scale
- **3** Ergonomically positioned carrying handles

- Hold function: While weighing patients that are unable to sit still, a mean average weight value is determined. This allows for sufficient time to attend to the patient, and then get a weight reading
- BMI function to determine underweight/normal weight/surplus weight
- High resolution readability: readability [d] can be increased by one decimal place for 5 sec. by the touch of a key
- Protective working cover included with delivery

Technical data

- **3** Large backlit LCD display, digit height 25 mm
- Dimensions of display device WxDxH 200x130x60 mm
- Dimensions of seating surface WxD 390x360 mm
- Overall dimensions WxDxH 625x990x985 mm
- Rechargeable battery pack integrated, as standard, operating time up to 40 h without backlight, charging time approx. 12 h
- Battery operation possible, 6x1.5 V AA not included, operating time up to 20 h
- **4** External mains adapter as standard, with strain-relief and disconnecter plug to protect the power supply components
- Net weight approx. 24 kg

Accessories

- **5** Practical mains adapter pouch to store the mains adapter which is supplied as standard. Fitting option using two Velcro fasteners, KERN MCC-A01, € 35,-
- Protective working cover over the display device, scope of delivery: 5 items, KERN MBC-A06S05, € 44,-
- Cleaning cloths, alcohol-free cloths for disinfectant wiping, quick acting, based on modern quaternary ammonium compounds and effective against papova viruses. Particularly gentle on materials, and very well suited for disinfecting products which are sensitive to alcohol. Fulfill the legal requirements for occupational safety in accordance with TRGS 525/540. Packaging contents 100 pcs., size 20x22 cm per cloth, KERN MYC-01, € 55,-

STANDARD FACTORY

*Within the EU, official verification (conformity assessment according to NAWI 2014/31/EU) is mandatory by law for scales that are intended for use as a medical device. Please add this to your order. We require the location of use and the post code for the verification

| Model | Weighing range | Readout | Verification value | Price excl. of VAT ex works € | Mandatory by law Verification |
|--------------|----------------|-----------|--------------------|-------------------------------|-------------------------------|
| KERN | [Max] kg | [d] kg | [e] kg | | KERN |
| MCC 250K100M | 250 | 0,1 | 0,1 | 1350,- | 965-129 € |

KERN Premium Line

Integratable (IoT-ready) balances with high-end performance

The capacity to integrate – the answer to the digitization requirements of today and in the future

- Our KERN Premium Line models ensure that you are future-proofed, right now. Thanks to the built-in WiFi interface (factory option for KERN MBA), these models can be integrated into existing or future EMR and EHR systems and thus into the hospital networks.
- The KERN Universal Port (KUP) enables greater flexibility and individualisation in terms of interfaces such as, for example RS-232, USB, Bluetooth or Ethernet – available for all KERN Premium Line models, without any installation outlay.*
- No manual data transfer thanks to the alibi memory as a factory option: Storing through the print key or remote control command: Date, time, alibi ID, weight (net, gross, tare). The data can be recalled through remote control commands or exported to Excel. Documentation or transfer errors are therefore eliminated and processes are accelerated.*
- A standardised concept of operation simplifies handling different products, as the menu structure is the same across all models.*

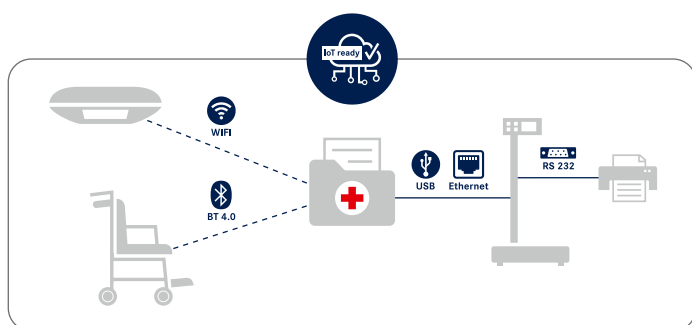
- Thanks to the standard power supply, optional rechargeable battery pack (except for KERN MBA) or battery option, the user is not tied to a particular location.
- Rechargeable battery or batteries can be easily inserted into the optimised battery compartment on the side of the terminal.*

With KERN you are ready for the future of weighing in the Internet of Things. Get IOT ready – with the Premium Line models. Discover these products on the following pages.

Note: All KERN Premium Line models in this catalogue are marked with the IOT-ready symbol.



* the KERN MBA is not included



The very best networking options in hospitals and care institutions with the IOT-ready models in the KERN Premium Line

Tip

Software KERN Balance Connection SCD-4.0 Pro*: Enables the connection of medical balances to practice EDP systems using the device data transfer protocol (GDT) and also the HL7 protocol

*not compatible with bluetooth interface adapter KUP-06

- Scope of supplies: 1 CD, 1 License
KERN SCD-4.0-PRO, € 380,-
- Scope of supplies: 1 CD, 5 Licenses,
KERN SCD-4.0-PROS05, € 1460,-
- Scope of supplies: Download link for 1 License,
KERN SCD-4.0-PRO-DL, € 380,-

Do you have any questions? The team from our Industry 4.0 centre of expertise will be happy to help:

E-Mail: ITsupport@kern-sohn.com



Compact baby scale with special Safe-Guard tray and approval for professional mobile or stationary medical use in medical diagnostics, verification optional

Features

- Verification class III (verification is optional)
- Approved as a medical device according to 93/42/EEC or regulation (EU) 2017/745
- Modern design
- **1** Safe-Guard tray: the special, particularly recessed tray with raised side bolsters offers optimum conditions for the safe weighing of babies
- Large, insensitive plastic tray, without corners and edges, therefore particularly hygienic and easy to clean
- Lightweight, compact design, therefore easy to transport and store
- Secure and non-slip positioning with height-adjustable rubber feet
- Easy to use
- Hold function: While weighing patients that are unable to lie still, a mean average weight value is determined. This allows for sufficient time to attend to the young patient, and then get a weight reading
- Integrated AUTO-OFF function to preserve the batteries

Technical data

- LCD display, digit height 25 mm
- Dimensions of tray WxD 600x260 mm
- Overall dimensions WxDxH 600x360x141 mm
- Batteries included, 6x1.5 V AA, operating time up to 20 h (up to 50 h without using WiFi)
- Net weight approx. 4,6 kg

Accessories

- **2** Mechanical height rod to fix to the scale, measuring range 30 cm-80 cm, increments of 0,1 cm, KERN MBA-A01, **€ 120,-**
- WiFi data interface to transfer data from balances to PC or tablet, must be ordered at purchase, KERN YMI-A01, **€ 95,-**
- Cleaning cloths, alcohol-free cloths for disinfectant wiping, quick acting, based on modern quaternary ammonium compounds and effective against papova viruses. Particularly gentle on materials, and very well suited for disinfecting products which are sensitive to alcohol. Fulfill the legal requirements for occupational safety in accordance with TRGS 525/540. Packaging contents 100 pcs., size 20x22 cm per cloth, KERN MYC-01, **€ 55,-**
- External mains adapter, 100 V - 240 V, Standard EU, CH, UK, KERN YKA-43, **€ 95,-**

STANDARD OPTION FACTORY

*Within the EU, official verification (conformity assessment according to NAWI 2014/31/EU) is mandatory by law for scales that are intended for use as a medical device. Please add this to your order. We require the location of use and the post code for the verification

| Model | Weighing range | Readout | Verification value | Price excl. of VAT ex works € | Mandatory by law Verification |
|-------------------|----------------|-----------|--------------------|-------------------------------|-------------------------------|
| | [Max] kg | [d] kg | [e] kg | € | KERN |
| KERN | | | | | € |
| MBA 10K-3M | 15 | 0,005 | 0,005 | 540,- | 965-128. 40,- |



Integratable personal scales for wireless transfer of weighing data to EMR or EHR systems



KERN MPN-H



KERN MPN-P



Features

- Verification class III (verification is optional)
- Approved as a medical device according to 93/42/EEC or regulation (EU) 2017/745
- Thanks to the integrated WiFi interface, this model is suited for wireless transfer of weights directly into the digital patient records. By doing this, any documentation or transfer errors which occur during manual data transfer are eliminated. Thanks to this technology, this model can be integrated into existing or future EMR and EHR systems and ensures that your investment is future-proofed right now
- KERN Universal Port (KUP): permits the connection of an external KUP interface adapter, such as, for example, RS-232, USB, Bluetooth, WiFi or Ethernet, for the exchange of data and control commands, without any installation outlay
- **1** Practical second display on the back of the scale, which makes it easy for both the patient and the doctor or nursing staff to read the weight
- **2** The MPN-HM model has an elegant height rod integrated into the column, which can be pulled out for use and has a sturdy plastic head rest and a measuring range from 89 - 205 cm
- **3** Patients with a height below 80 cm can be measured using the measuring scale fitted on the column
- The ergonomically optimised shape and robust design mean that this range is ideal for daily use in a professional environment

- Secure and non-slip positioning with height-adjustable rubber feet
- Large platform with non-slip and wear-resistant surface made of plastic, to provide a secure footing for patients
- Hold function: While weighing patients that are unable to stand still, a mean average weight value is determined. This allows for sufficient time to attend to the patient, and then get a weight reading
- Mother and child function: the parent's weight is measured, and the scale is reset to zero via the button. Subsequently, the parent and baby are weighed together. The weight of the child will then show on the display. This is particularly practical for weighing infants, who can remain cradled in the arms of a parent during the weighing process
- BMI function to determine underweight/normal weight/surplus weight
- High resolution readability: readability [d] can be increased by one decimal place for 5 sec. by the touch of a key
- **4** Battery- or mains-powered, rechargeable battery operation optional
- **5** Easy to transport thanks to the two integrated transport wheels
- Protective working cover included with delivery

Technical data

- Large LCD display, digit height 25 mm
- Weighing plate dimensions W×D×H 365×360×80 mm
- Battery operation possible, 6×1.5 V AA not included, operating time up to 20 h
- Mains adapter external, standard
- Net weight approx. 12 kg

Accessories

- Internal rechargeable battery pack, operating time up to 48 h, charging time approx. 8 h, KERN YMR-01, **€ 55,-**
- External mains adapter, 100 V - 240 V, Standard EU, UK, KERN YKA-51, **€ 80,-**
- External data interface RS-232, interface cable included, KERN KUP-01, **€ 60,-**
- External data interface USB, interface cable included, KERN KUP-03, **€ 75,-**
- External data interface Ethernet, KERN KUP-04, **€ 115,-**
- Bluetooth interface adapter, KERN KUP-06, **€ 99,-**
- Extension box for connecting up to three interfaces in parallel, KERN KUP-13, **€ 75,-**
- Memory module with real time clock (alibi memory), KERN YMM-03, **€ 160,-**

*Within the EU, official verification (conformity assessment according to NAWI 2014/31/EU) is mandatory by law for scales that are intended for use as a medical device. Please add this to your order. We require the location of use and the post code for the verification

STANDARD

- WIFI
- GLP
- PRINTER
- KUP
- PROTOCOL
- MOVE
- BATT
- MULTI
- 1 DAY

OPTION

- RS 232
- USB
- BT 4.0
- LAN
- ACCU

FACTORY

- ALIBI
- +3 DAYS



| Model | Weighing range | Readout | Verification value | Overall dimensions (with extracted height rod) | Price excl. of VAT ex works | Mandatory by law Verification |
|--------------------------|----------------|---------|--------------------|--|-----------------------------|-------------------------------|
| | [Max] kg | [d] kg | [e] kg | W×D×H mm | € | KERN € |
| KERN MPN 200K-1PM | 250 | 0,1 | 0,1 | 365×570×1030 | 810,- | 965-129 60,- |
| KERN MPN 200K-1HM | 250 | 0,1 | 0,1 | 365×570×2134 | 860,- | 965-129 60,- |



Professional integratable personal scales for wireless transfer of weighing data to the EMR or EHR systems – also for overweight patients in the obese category



KERN MPN-M



KERN MPN-LM



Features

- Verification class III (verification is optional)
- Approved as a medical device according to 93/42/EEC or regulation (EU) 2017/745
- Thanks to the integrated WiFi interface, this model is suited for wireless transfer of weights directly into the digital patient records. By doing this, any documentation or transfer errors which occur during manual data transfer are eliminated. Thanks to this technology, this model can be integrated into existing or future EMR and EHR systems and ensures that your investment is future-proofed right now
- KERN Universal Port (KUP): permits the connection of an external KUP interface adapter, such as, for example, RS-232, USB, Bluetooth, WiFi or Ethernet, for the exchange of data and control commands, without any installation outlay
- KERN MPN 300K-1LM: Version with [Max] = 300 kg and larger weighing plate. Specially suitable for weighing overweight patients who are in the obese category
- Ideally suited for hospitals, clinics and doctors' surgeries
- Robust design for daily use in a professional environment
- Easy and hygienic cleaning
- Secure and non-slip positioning with height-adjustable rubber feet

- **1** Level indicator to level the balance precisely
- KERN MPN 300K-1LM: Sturdy handle for easy transportation of the scale
- **2** Flexible positioning of display device, e.g. free-standing or mounted to the wall. Wall mount for display device standard
- Large platform with non-slip and wear-resistant surface made of plastic, to provide a secure footing for patients
- Hold function: While weighing patients that are unable to stand still, a mean average weight value is determined. This allows for sufficient time to attend to the patient, and then get a weight reading
- Mother and child function: the parent's weight is measured, and the scale is reset to zero via the button. Subsequently, the parent and baby are weighed together. The weight of the child will then show on the display. This is particularly practical for weighing infants, who can remain cradled in the arms of a parent during the weighing process
- BMI function to determine underweight/normal weight/surplus weight
- High resolution readability: readability [d] can be increased by one decimal place for 5 sec. by the touch of a key
- Battery- or mains-powered, rechargeable battery operation optional
- Protective working cover included with delivery

Technical data

- Large LCD display, digit height 25 mm
- Weighing plate dimensions WxDxH
MPN: 365x370x80 mm
MPN-L: 400x500x120 mm
- Dimensions of display device WxDxH
210x54x100 mm
- Cable length of display device approx. 1,8 m
- Battery operation possible, 6x1.5 V AA not included, operating time up to 20 h
- Mains adapter external, standard
- Net weight approx. 12 kg

Accessories

- Internal rechargeable battery pack, operating time up to 48 h, charging time approx. 8 h, KERN YMR-01, **€ 55,-**
- External mains adapter, 100 V - 240 V, Standard EU, UK, KERN YKA-51, **€ 80,-**
- External data interface RS-232, interface cable included, KERN KUP-01, **€ 60,-**
- External data interface USB, interface cable included, KERN KUP-03, **€ 75,-**
- External data interface Ethernet, KERN KUP-04, **€ 115,-**
- Bluetooth interface adapter, KERN KUP-06, **€ 99,-**
- Extension box for connecting up to three interfaces in parallel, KERN KUP-13, **€ 75,-**
- Memory module with real time clock (alibi memory), KERN YMM-03, **€ 160,-**

*Within the EU, official verification (conformity assessment according to NAWI 2014/31/EU) is mandatory by law for scales that are intended for use as a medical device. Please add this to your order. We require the location of use and the post code for the verification

STANDARD

| | | | | | | | |
|------|----------------|-----|-----------------|------|------|-------|-------|
| | | | | | | | |
| WIFI | GLP PRINTER | KUP | KCP PROTOCOL | MOVE | BATT | MULTI | 1 DAY |

OPTION

| | | | | |
|--------|-----|--------|-----|------|
| | | | | |
| RS 232 | USB | BT 4.0 | LAN | ACCU |

FACTORY

| | |
|-------|---------|
| | |
| ALIBI | +3 DAYS |



| Model | Weighing range [Max] kg | Readout [d] kg | Verification value [e] kg | Price excl. of VAT ex works € | Mandatory by law Verification | |
|--------------|-------------------------------|----------------------|---------------------------------|--|----------------------------------|------|
| | | | | | | € |
| KERN | | | | | | |
| MPN 200K-1M | 250 | 0,1 | 0,1 | 650,- | 965-129 | 60,- |
| MPN 300K-1LM | 300 | 0,1 | 0,1 | 820,- | 965-129 | 60,- |



Robust integratable wheelchair platform scale for wireless transfer of weighing data to EMR or EHR systems





Features

- Verification class III (verification is optional)
- Approved as a medical device according to 93/42/EEC or regulation (EU) 2017/745
- Thanks to the integrated WiFi interface, this model is suited for wireless transfer of weights directly into the digital patient records. By doing this, any documentation or transfer errors which occur during manual data transfer are eliminated. Thanks to this technology, this model can be integrated into existing or future EMR and EHR systems and ensures that your investment is future-proofed right now
- KERN Universal Port (KUP): permits the connection of an external KUP interface adapter, such as, for example, RS-232, USB, Bluetooth, WiFi or Ethernet, for the exchange of data and control commands, without any installation outlay
- Especially suitable for weighing patients in wheelchairs because of the low-profile platform which can be approached from either side
- Secure and non-slip positioning with height-adjustable rubber feet
- Level indicator to level the balance precisely
- Hold function: While weighing patients that are unable to stand still, a mean average weight value is determined. This allows for sufficient time to attend to the patient, and then get a weight reading
- BMI function to determine underweight/normal weight/surplus weight
- The scale can be easily transported using the handle and two rollers and does not require much storage space
- **1** Wall mount for display device, standard
- Battery- or mains-powered, rechargeable battery operation optional
- Protective working cover included with delivery

Technical data

- Large LCD display, digit height 25 mm
- Dimensions weighing surface WxD 910x740 mm
- Dimensions of display device WxDxH 210x54x100 mm
- Cable length of display device approx. 1,8 m
- Overall dimensions WxDxH 1160x830x73 mm
- Battery operation possible, 6x1.5 V AA not included, operating time up to 20 h
- Mains adapter external, standard
- Net weight approx. 30 kg

Accessories

- Internal rechargeable battery pack, operating time up to 48 h, charging time approx. 8 h, KERN YMR-01, **€ 55,-**
- External mains adapter, 100 V - 240 V, Standard EU, UK, KERN YKA-51, **€ 80,-**
- External data interface RS-232, interface cable included, KERN KUP-01, **€ 60,-**
- External data interface USB, interface cable included, KERN KUP-03, **€ 75,-**
- External data interface Ethernet, KERN KUP-04, **€ 115,-**
- Bluetooth interface adapter, KERN KUP-06, **€ 99,-**
- Extension box for connecting up to three interfaces in parallel, KERN KUP-13, **€ 75,-**
- Memory module with real time clock (alibi memory), KERN YMM-03, **€ 160,-**

*Within the EU, official verification (conformity assessment according to NAWI 2014/31/EU) is mandatory by law for scales that are intended for use as a medical device. Please add this to your order. We require the location of use and the post code for the verification

STANDARD

OPTION

FACTORY

| Model | Weighing range | Readout | Verification value | Price excl. of VAT ex works | Mandatory by law Verification |
|--------------------|----------------|-----------|--------------------|-----------------------------|-------------------------------|
| | [Max] kg | [d] kg | [e] kg | € | KERN |
| MWN 300K-1M | 300 | 0,1 | 0,1 | 1690,- | 965-129 € 60,- |



Mobile integratable chair scale for wireless transfer of weighing data to EMR or EHR systems





Features

- Verification class III (verification is optional)
- Approved as a medical device according to 93/42/EEC or regulation (EU) 2017/745
- Thanks to the integrated WiFi interface, this model is suited for wireless transfer of weights directly into the digital patient records. By doing this, any documentation or transfer errors which occur during manual data transfer are eliminated. Thanks to this technology, this model can be integrated into existing or future EMR and EHR systems and ensures that your investment is future-proofed right now
- KERN Universal Port (KUP): permits the connection of an external KUP interface adapter, such as, for example, RS-232, USB, Bluetooth, WiFi or Ethernet, for the exchange of data and control commands, without any installation outlay
- This chair scale is the ideal measuring instrument for retirement homes, rehabilitation centres and clinics with lots of patients, and can weigh overweight people up to 250 kg
- **1** Mobile version with two steerable rollers and particularly convenient locking brakes at the rear
- With its four wheels, this chair scale provides maximum mobility in bringing the scale to the patient. This ensures more efficient use of time for the clinic staff and greater safety for the patients who can be weighed in their familiar environment
- The rollers, with their large diameter, make it easier to get over door thresholds, edges and across the gaps into elevators

- For fragile patients, the comfortable, ergonomically optimised seat offers secure support during weighing
- Because of the clearly contrasting black colour of the seating surface, footrests and armrests ideally suitable for dementia patients
- **2** Two foldable armrests and footrests make transfers into the chair easier. Ideal for overweight patients or barrier-free use, e.g. for transfers from a bed to the scale
- Ergonomically positioned carrying handles
- Hold function: While weighing patients that are unable to sit still, a mean average weight value is determined. This allows for sufficient time to attend to the patient, and then get a weight reading
- BMI function to determine underweight/normal weight/surplus weight
- High resolution readability: readability [d] can be increased by one decimal place for 5 sec. by the touch of a key
- Battery- or mains-powered, rechargeable battery operation optional
- Protective working cover included with delivery

Technical data

- **3** Large LCD display, digit height 25 mm
- Dimensions of seating surface WxD 390x360 mm
- Dimensions of display device WxDxH 210x54x100 mm
- Battery operation possible, 6x1.5 V AA not included, operating time up to 20 h
- **4** Mains adapter external, standard
- Net weight approx. 24 kg

Accessories

- **5** Practical mains adapter pouch to store the mains adapter which is supplied as standard. Fitting option using two Velcro fasteners, KERN MCC-A01, € 35,-
- Internal rechargeable battery pack, operating time up to 48 h, charging time approx. 8 h, KERN YMR-01, € 55,-
- External mains adapter, 100 V - 240 V, Standard EU, UK, KERN YKA-51, € 80,-
- External data interface RS-232, interface cable included, KERN KUP-01, € 60,-
- External data interface USB, interface cable included, KERN KUP-03, € 75,-
- External data interface Ethernet, KERN KUP-04, € 115,-
- Bluetooth interface adapter, KERN KUP-06, € 99,-
- Extension box for connecting up to three interfaces in parallel, KERN KUP-13, € 75,-
- Memory module with real time clock (alibi memory), KERN YMM-03, € 160,-

*Within the EU, official verification (conformity assessment according to NAWI 2014/31/EU) is mandatory by law for scales that are intended for use as a medical device. Please add this to your order. We require the location of use and the post code for the verification

STANDARD

- WiFi
- GLP PRINTER
- KUP
- KCP PROTOCOL
- MOVE
- BATT
- MULTI
- 2 DAYS

OPTION

- RS 232
- USB
- BT 4.0
- LAN
- ACCU

FACTORY

- ALIBI
- M +3 DAYS
- CE 0297

| Model | Weighing range | Readout | Verification value | Price excl. of VAT ex works € | Mandatory by law Verification |
|-------------|----------------|-----------|--------------------|-------------------------------|-------------------------------|
| KERN | [Max] kg | [d] kg | [e] kg | | M III KERN |
| MCN 200K-1M | 250 | 0,1 | 0,1 | 1850,- | 965-129 60,- |